

STANDARD CHANGE-MAKERS, INC.

RECYCLERS

FOR REAR LOAD and FRONT LOAD MODULAR SERIES CHANGE MACHINES

Turn your Standard Coin Changer into a Bill & Coin Exchanger using a Bill Recycler

Standard Change-Makers' Modular Series changers can now be equipped with the optional CPi (Mars) Talos Series Bill Recyclers. These recyclers are modifications of the Talos bill acceptors, with a recycler compartment attached to the bill path and allows you to dispense bills, along with coins, for higher denomination bills (like \$20's & \$10's).

For example: Owners pre-load \$5 bills into each Recycler. Each Recycler holds up to 30 bills. Then, a patron inserts a \$20 bill, the machine is programmed to dispense twenty quarters from the coin hoppers, **AND** three \$5 bills from the recycler. The product is called a "recycler" because when a patron inserts a \$5 bill – that same \$5 bill is stored in the recycler compartment, and dispensed to the next patron that inserts either a \$10 or \$20 bill. This process is similar to a cash drawer - but does not require an attendant to touch the cash! Customers will appreciate not getting more quarters than they need. And if they do need more quarters, simply insert the \$5 bill back in the machine.

The Recycler Kit features:

- > Requires EF+ Module - with Remote Notification Feature. Send text messages to up to five email addresses or mobile phones with daily audit reports and alarm condition alerts - such as "Hopper Low-Level" and "Bill Stacker Full" alerts
- > The Recycler is programmable for acceptance and dispense, and has an LED readout with remaining bill capacity and error code feedback
- > Recycler bills are replenished by customers using the machine – as they insert \$5 bills, the bill acceptor will "recycle" some of those bills in the recycler to replenish the bill capacity. All other denominations are stored in the 500 bills stacker
- > "Coins Only" Indicator Lights – indicates that the recycler is empty, and bills will be dispensed from the other recycler. When both 'coins only' lights are lit - only coins will be dispensed

Available for these Modular Series Models

Rear Load: MC520RL-DA and MC640RL-DA

Front Load: MC720-DA and MC840-DA

RECYCLERS PAY-OUT AS FOLLOWS:

\$20 =	20 Quarters	+	3 \$5 Bills
\$10 =	20 Quarters	+	1 \$5 Bills
\$5 =	20 Quarters		
\$1 =	4 Quarters		

The Recyclers are only available on "-DA" (Dual Acceptor) models, due to the limited capacity of the recycler being 25-30 bills - with the concept of customers helping to replenish the capacity throughout your operating hours.



CPi T7 Talos Recycler



Standard
Change-Makers, Inc.

1-800-968-6955

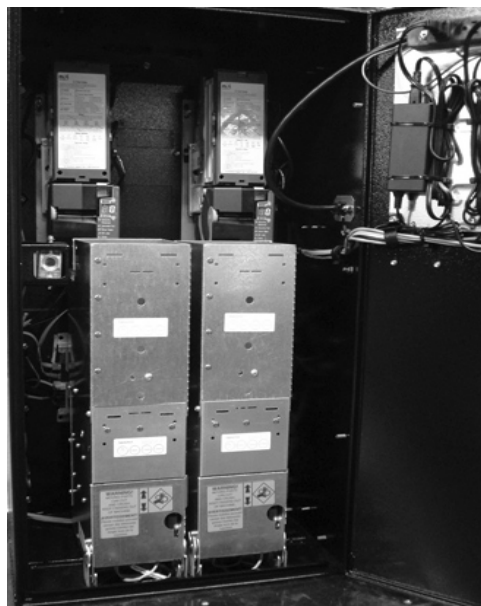
www.standardchange.com

Standard Change-Makers CHANGE MODELS WITH RECYCLERS OPTION

MODEL #	DIMENSIONS			Ship Wt. (lbs.)	ACCEPTS	No. of Recyclers	Recycler Bill Capacity	No. of Coin Hoppers	Coin Capacity	Bill Acceptor Stacker Capacity
	H	W	D							
REAR LOAD MODELS:										
MC520RL-RHS	32"	18"	13"	175	\$1-5-10-20	2	2 x 30 = 60	2	8,000 Qtrs (\$2,000)	500 x 2
MC520RL-RHV	32"	18"	13"	175	\$1-5-10-20	2	2 x 30 = 60	2	9,200 Qtrs (\$2,300)	500 x 2
<i>RHS = Recycler with Security Bezel Install (More Secure); RHV = Recyclers with larger, High Visibility Bezel (More Attraction)</i>										
MC640RL-RHS	34"	29.25"	18"	375	\$1-5-10-20	2	2 x 30 = 60	4	12,800 Qtrs (\$3,200)	500 x 2
FRONT LOAD MODELS:										
MC720-RHS	28"	17"	13"	155	\$1-5-10-20	2	2 x 30 = 60	2	4,000 Qtrs (\$1,000)	500 x 2
MC840-RHS	32"	26"	18"	365	\$1-5-10-20	2	2 x 30 = 60	4	12,800 Qtrs (\$3,200)	500 x 2

- > Recycler is the CPI (Mars) Talos Note Recycler with Up-Stacker (holds up to 500 bills MAXIMUM CAPACITY)
- > Programmed to Recycle: \$5 Bills
- > Each machine includes **EF+ Module** (with Remote Notification), two Recyclers, and two Modular Series Control Module - allows you to see each recycler as a separate dispenser (along with each coin hopper) in the programming and diagnostic menu of the EF+ Module.
- > Each machine supplied with an two (2) additional "Coins Only When Lit" light - for conditions when recycler is empty or jammed.
- > **Please Note:** Bills to be recycled must be inserted into the bill acceptor while in programming mode. On Rear Load machines - this operation requires owners to enter the back of the machine, then go to the front of the machine to insert the bills. You can not load directly into recycler.
- > **Security Bezel (RHS)** shows only a small amount of the bill acceptor bezel through the front of the machine. The **Hi-Viz Bezel (RHV)** provides more attraction and attention to the change machine and must be installed so that all of the bezel is showing through the front.
- > **IMPORTANT NOTE:** Recyclers will affect the accuracy of audit counts.

Prices are shown in U.S. Dollars.
 Subject to change without prior notice.
 F.O.B.: Indianapolis, IN (origin)



The MC520RL-RHV with interior photo. Shows two 4.6K (4,600 Quarters) Coin Hoppers. Clearance allows full tilt dump operation and still see the LED Display.